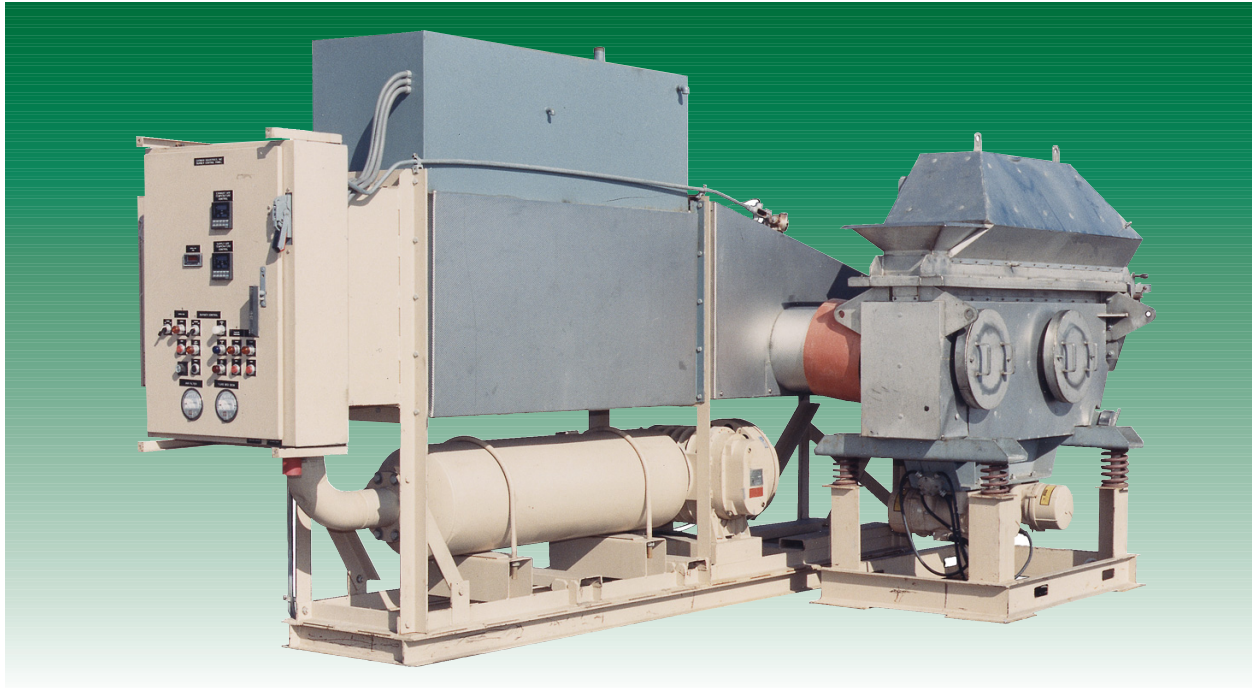


**carman**®

1005 W. Riverside Dr.  
Jeffersonville, In 47130

# Fluid Bed Processor Available for Field Tests



This Vibrating Fluid Bed Processor test unit comes in two self-contained modules with integral control panel. Each is forklift-ready and installation requires no anchor bolting.

## Fully-Adjustable Fluid Bed Processor

All pertinent design parameters are adjustable. The system contains instrumentation for gathering pressures, temperatures and air flows to aid in full scale production equipment sizing.

### Features:

- Adjustable Weir
- Access Doors
- Sampling Ports
- Controls
- Blower Silencing
- Insulation

### Accessories:

- Steam Coil
- Cooling Coil with Chiller
- Cyclone with Exhaust Blower

### Specifications:

- Deck Area:** 5 square feet  
**Air Flow:** 200 to 1400 CFM  
**Air Temperature:** Ambient to 525°F  
**Electrical Requirement:** 460V/3 PH/  
60 Hz, 60 Amps  
**Fuel Requirement:** Natural Gas or  
Propane 1.5 to  
10 PSIG  
**Floor Space Requirements:** 8' x 16' x 8' High  
**Component Weights:** Fluid Bed -  
2,600 lbs.  
Air System -  
4,900 lbs.

## Other Test Units Available, Too

These additional Carman products are available for field tests or market studies:

- Vibrating Conveyor
- Feeder
- Bin Discharger
- Densifier
- Spiral Elevator

### Notes:

- (1) See back for Floor Plan/Elevation Layout
- (2) Dust Collector not included

Executive Offices 812/288-4710  
Sales Offices 800/456-7560  
FAX 812/288-4708  
Internet [www.carmanindustries.com](http://www.carmanindustries.com)

# Floor Plan and Elevation Layout

